



## naked earth

made with organically grown grapes  
www.nakedearthwine.com

**Rouge 2007**

*50% Merlot, 50% Grenache*

**85** Wine Spectator

Beautiful concentration, with rich and dark crimson hues, showing raspberry-red tinges at the edges. An impressive nose of strawberry and vanilla, with accents of cinnamon and smoke.



IMPORTED BY CANNON WINES LIMITED  
WWW.CANNONWINES.COM



## naked earth

made with organically grown grapes  
www.nakedearthwine.com

**Rouge 2007**

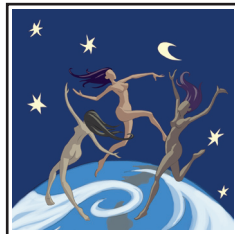
*50% Merlot, 50% Grenache*

**85** Wine Spectator

Beautiful concentration, with rich and dark crimson hues, showing raspberry-red tinges at the edges. An impressive nose of strawberry and vanilla, with accents of cinnamon and smoke.



IMPORTED BY CANNON WINES LIMITED  
WWW.CANNONWINES.COM



## naked earth

made with organically grown grapes  
www.nakedearthwine.com

**Rouge 2007**

*50% Merlot, 50% Grenache*

**85** Wine Spectator

Beautiful concentration, with rich and dark crimson hues, showing raspberry-red tinges at the edges. An impressive nose of strawberry and vanilla, with accents of cinnamon and smoke.



IMPORTED BY CANNON WINES LIMITED  
WWW.CANNONWINES.COM



## naked earth

made with organically grown grapes  
www.nakedearthwine.com

**Rouge 2007**

*50% Merlot, 50% Grenache*

**85** Wine Spectator

Beautiful concentration, with rich and dark crimson hues, showing raspberry-red tinges at the edges. An impressive nose of strawberry and vanilla, with accents of cinnamon and smoke.



IMPORTED BY CANNON WINES LIMITED  
WWW.CANNONWINES.COM